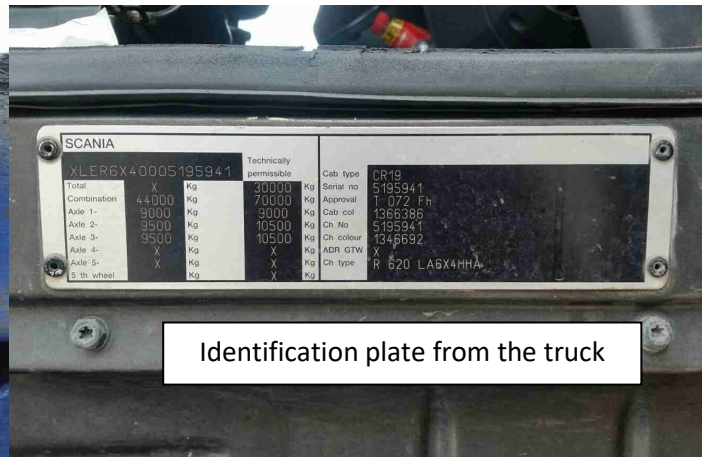


\* A copy of the registration certificate or manufacturer certificate mentioning this data is absolutely necessary.

## Documents to join necessarily :

- Copy of the registration documents
- Copy from the COC and/or technical data sheet
- Pictures from the truck (see example here under) :



- Attestation from the manufacturer of the truck for the board weighting system
- If applicable, photo from the identification plate of the slider